



**T&B Catalog Number:** L-11-40-9-C  
**UPC Number:** 72849493303  
**Description:** Cable Tie 40lb 11" Natural All-Nylon 100 Per Bag

**Status:** Active

### General

Material Nylon 6.6  
 Color Natural

### Dimension Information

Length (inches) 11.5  
 Width (inches) 0.146  
 Max. Wire Bundle Diameter (inches) 3  
 Min. Wire Bundle Diameter (inches) 1/16

### Specifications

Tensile Strength (lbs.) 40  
 Temperature Rating -40°F to 185°F  
 Flammability Rating UL 94 V-2

### Tooling

Application Tools ERG50, QC-100, L-200, L-400-C

### Packaging

T&B Order Multiple 100  
 T&B Inner Pack 100  
 Package in Units 5000  
 Package Type Standard  
 T&B Sold in UOM Each  
 T&B Weight Per UOM 3.52 lbs. per 1000

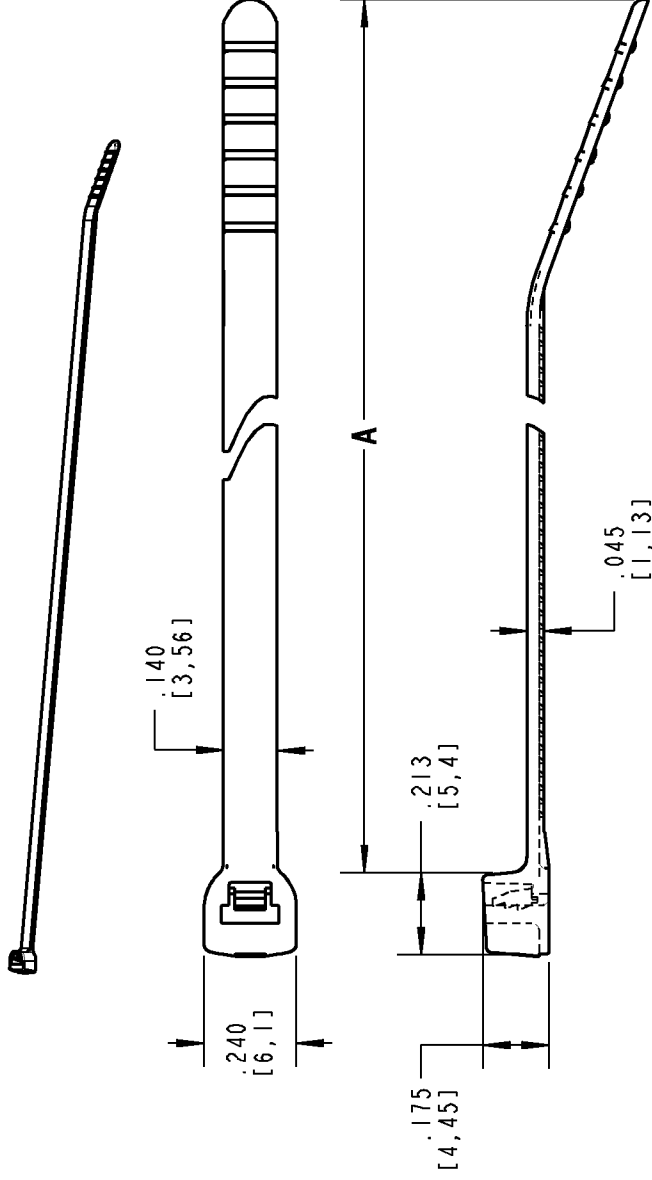
### Application Support

T&B Sales Drawings wsd-000221  
 Overview Available on Website  
 Material Selection Guide Available on Website  
 Available Colors Available on Website

### Certifications

RoHS Compliance Yes

### Certifications



**NOTES:**

1. MATERIAL: NYLON 6,6
2. FLAMMABILITY: UL94V-2
3. OPERATING TEMPERATURE RANGE: -40°F [-40°C] TO 185°F [85°C]
4. MINIMUM TENSILE RATING: 40 LBS [178 N]
5. MINIMUM WIRE BUNDLE: .0625 [1,59]
6. MAXIMUM WIRE BUNDLE: SEE TABLE
7. INSTALLATION TOOL/SETTING: WT199/1-3 (MS90387-1) OR ERG299/1-3

| CATALOG NUMBER | MAXIMUM WIRE BUNDLE | A               |
|----------------|---------------------|-----------------|
| L-8-40-**-**   | 2.000 [50,8]        | 8.510 [216,15]  |
| L-8-40FL-**-** | 2.000 [50,8]        | 8.510 [216,15]  |
| L-11-40-**-**  | 3.000 [76,2]        | 11.287 [286,69] |
| L-14-40-**-**  | 4.000 [101,6]       | 14.287 [362,9]  |

\* = COLOR CODE - 0 = BLACK (OUTDOOR) 4 = YELLOW 8 = GRAY 17 = FLUORESCENT YELLOW  
 1 = BROWN 5 = GREEN 9 = NATURAL 18 = FLUORESCENT GREEN  
 2 = RED 6 = BLUE 11 = FLUORESCENT PINK 20 = FLUORESCENT BLUE  
 3 = ORANGE 7 = PURPLE 16 = FLUORESCENT ORANGE

\*\* = PACKAGING - C = STD PKG (100) D = BULK PKG (500) M = BULK PKG (1,000)

CONSULT CUSTOMER SERVICE FOR PACKAGE QUANTITY AVAILABILITY

**FLUORESCENT COLORS NOT "UR" OR "CE" RECOGNIZED OR LISTED**

**GENERAL NOTES**

1. ALL DIMENSIONS ARE FOR REFERENCE ONLY.
2. DIMENSIONS IN BRACKETS [ ] ARE IN METRIC UNITS.

**REVISIONS**

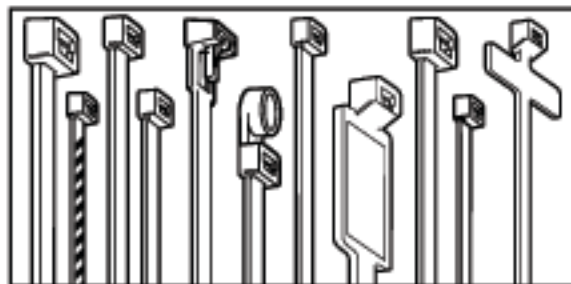
- SEE ERN (\*\*\*\*) FOR APPROVAL SIGNATURES & RELEASE DATE.  
 PROJECT NO: \*\*\*\*

**Thomas & Betts**  
 www.tb.com

DESCRIPTION: **8", 11" & 14" SERIES 40 INTERMEDIATE CABLE TIES**

|                                  |           |          |             |
|----------------------------------|-----------|----------|-------------|
| ORIGINAL PROJECT NO / ( ERN NO ) | SHEET NO: | REV. NO: | DRAWING NO: |
| FMA0192 / ( 2006127 )            | 1 OF 1    | -        | WSD-000221  |

# Ty-Fast® Cable Ties



- MINIATURE
- HEAVY DUTY
- INTERMEDIATE
- EXTRA HEAVY DUTY
- STANDARD
- RELEASABLE TIES

- MOUNTING HEAD
- STRIPED TIES
- RESTRICTED BUNDLE
- IDENTIFICATION TIES
- MIL-SPEC TIES

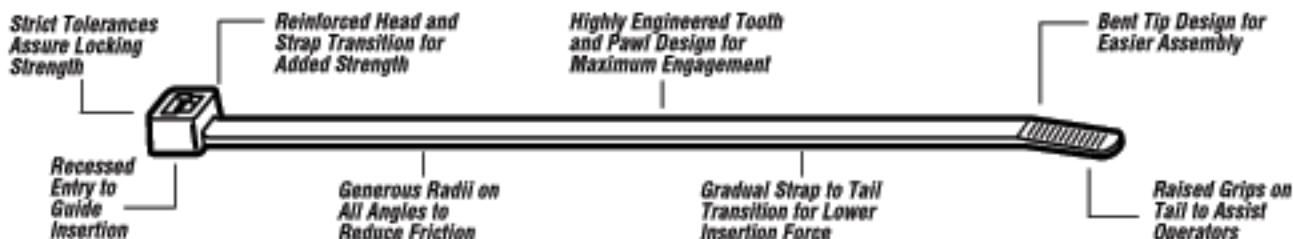
Ty-Fast® Cable Ties are available in lengths from 4" to our exclusive 48" strap. Cable Ties will satisfy bundling requirements from 1/8" to 15" and loop tensile strengths from 18 to 175 pounds.

Cable Ties are stocked in materials and colors as listed. Contact your Ty-Fast® Distributor or Customer Service Representative for availability in special materials and colors.

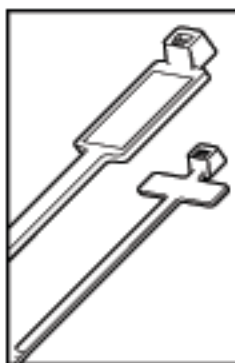
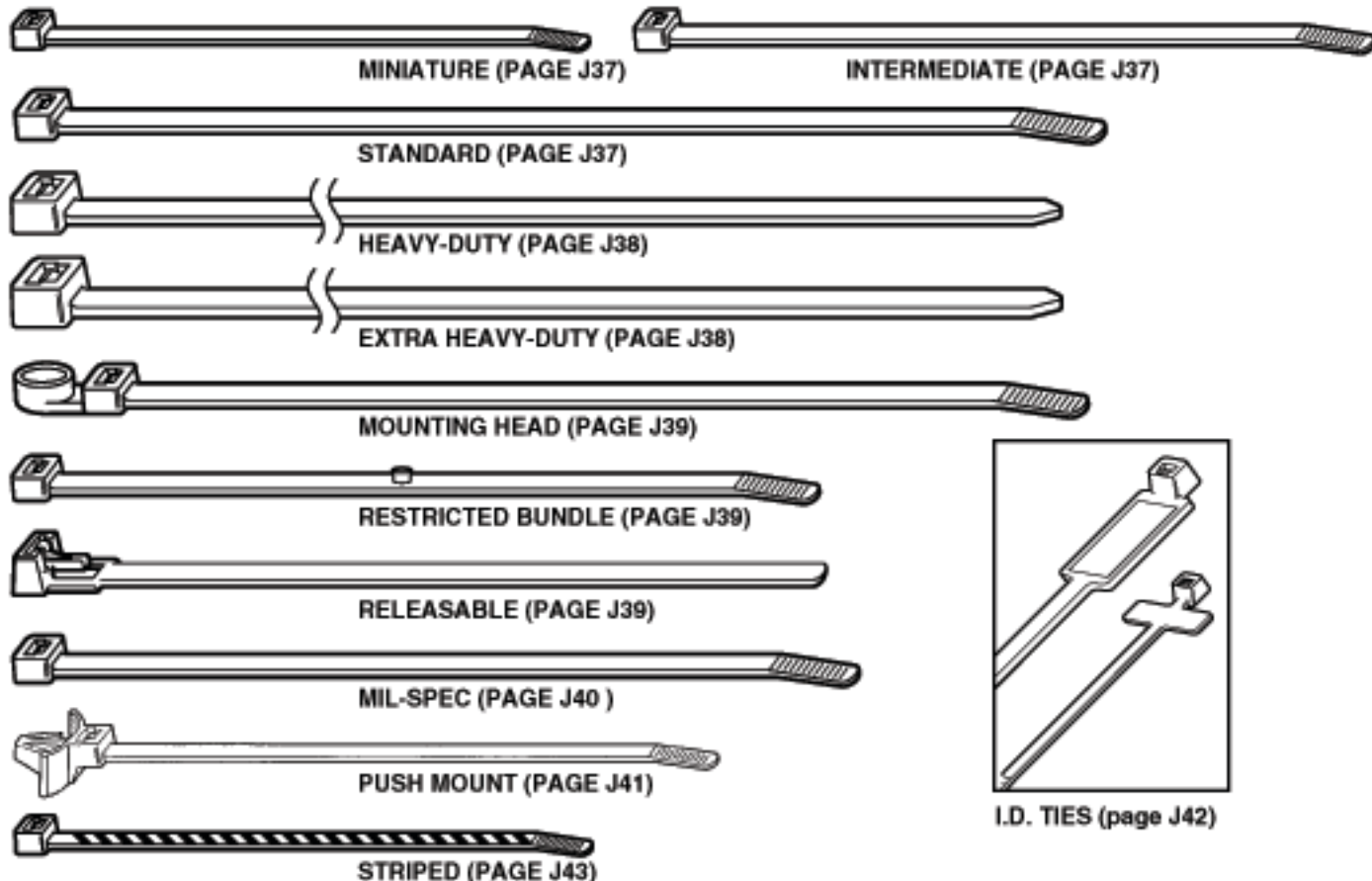
Where applicable, Ty-Fast® Cable Ties are UL Recognized, Mil-Spec Approved and/or QPL Listed.

State-of-the-art robotic and raw material handling equipment assures product and material integrity throughout the manufacturing process. Overall quality is achieved through statistical analysis and quality driven operator objectives. Ty-Fast® has attained Mil-Spec I-45208 quality ratings from a number of equipment manufacturers.

Ty-Fast® products are sold through stocking T&B Distributors.



Ty-Rap®/Ty-Fast®



I.D. TIES (page J42)

**Thomas & Betts**

## Catamount® Cable Ties

Catamount® Ties and Terminals fit the needs of general-purpose fastening and wire terminations. Installers quickly discover that Catamount products offer durable and value-priced cable bundling for a variety of commercial and residential construction applications. Electricians can also take advantage of other benefits in stocking Catamount products in their toolboxes, such as more terminals per bag in most popular sizes than leading comparable brands.

Catamount Ties and Terminals are offered in a wide range of sizes, styles and colors and meet listing requirements for most electrical termination and fastening projects. A choice of matching tools are also offered to provide quick and reliable installations.

### Miniature — Series 18



| CAT. NO.   | LENGTH (IN.) | MAX. BUNDLE DIA. | COLOR   | STD. QTY. |
|------------|--------------|------------------|---------|-----------|
| L-4-18-9-C | 4.0          | 1/8              | Natural | 100       |
| L-4-18-0-C | 4.0          | 1/8              | Black   | 100       |
| L-6-18-9-C | 6.4          | 1 1/8            | Natural | 100       |
| L-6-18-0-C | 6.4          | 1 1/8            | Black   | 100       |
| L-8-18-9-C | 8.0          | 2                | Natural | 100       |
| L-8-18-0-C | 8.0          | 2                | Black   | 100       |

Bulk packages available. Contact Customer Service.

Use QC-102, L-200, L-400-C or ERG-50 Installation Tools

### Intermediate — Series 30



| CAT. NO.    | LENGTH (IN.) | MAX. BUNDLE DIA. | COLOR   | STD. QTY. |
|-------------|--------------|------------------|---------|-----------|
| L-5-30-9-C  | 5.6          | 1 1/8            | Natural | 100       |
| L-5-30-0-C  | 5.6          | 1 1/8            | Black   | 100       |
| L-8-40-9-C  | 8.5          | 2                | Natural | 100       |
| L-8-40-0-C  | 8.5          | 2                | Black   | 100       |
| L-11-40-9-C | 11.5         | 3                | Natural | 100       |
| L-11-40-0-C | 11.5         | 3                | Black   | 100       |
| L-14-40-9-C | 14.5         | 4                | Natural | 100       |
| L-14-40-0-C | 14.5         | 4                | Black   | 100       |

Bulk packages available. Contact Customer Service.

Use QC-102, L-200, L-400-C or ERG-50 Installation Tools

### Standard — Series 50



| CAT. NO.    | LENGTH (IN.) | MAX. BUNDLE DIA. | COLOR   | STD. QTY. |
|-------------|--------------|------------------|---------|-----------|
| L-5-50-9-C  | 5.5          | 1                | Natural | 100       |
| L-5-50-0-C  | 5.5          | 1                | Black   | 100       |
| L-7-50-0-C  | 7.5          | 1 1/8            | Natural | 100       |
| L-7-50-9-C  | 7.5          | 1 1/8            | Black   | 100       |
| L-11-50-9-C | 11.1         | 3                | Natural | 100       |
| L-11-50-0-C | 11.1         | 3                | Black   | 100       |
| L-14-50-9-C | 14.1         | 4                | Natural | 100       |
| L-14-50-0-C | 14.1         | 4                | Black   | 100       |

Bulk packages available. Contact Customer Service.

Use QC-102, L-200, L-400-C or ERG-50 Installation Tools

### Heavy-Duty — Series 120



| CAT. NO.     | LENGTH (IN.) | MAX. BUNDLE DIA. | COLOR   | STD. QTY. |
|--------------|--------------|------------------|---------|-----------|
| L-8-120-9-C  | 8.0          | 2                | Natural | 100       |
| L-8-120-0-C  | 8.0          | 2                | Black   | 100       |
| L-11-120-9-C | 11.1         | 3                | Natural | 100       |
| L-11-120-0-C | 11.1         | 3                | Black   | 100       |
| L-14-120-9-C | 14.2         | 4                | Natural | 100       |
| L-14-120-0-C | 14.2         | 4                | Black   | 100       |
| L-18-120-9-L | 18.0         | 4 1/2            | Natural | 50        |
| L-18-120-0-L | 18.0         | 4 1/2            | Black   | 50        |
| L-24-120-9-L | 24.2         | 7                | Natural | 50        |
| L-24-120-0-L | 24.2         | 7                | Black   | 50        |
| L-28-120-9-L | 28.0         | 9                | Natural | 50        |
| L-28-120-0-L | 28.0         | 9                | Black   | 50        |

Use L-300C or ERG-120 Installation Tool

### Extra Heavy-Duty — Series 175



| CAT. NO.     | LENGTH (IN.) | MAX. BUNDLE DIA. | COLOR   | STD. QTY. |
|--------------|--------------|------------------|---------|-----------|
| L-24-175-9-L | 24.0         | 7.2              | Natural | 50        |
| L-24-175-0-L | 24.0         | 7.2              | Black   | 50        |
| L-34-175-9-L | 34.0         | 10               | Natural | 50        |
| L-36-175-9-L | 36.0         | 10 1/2           | Natural | 50        |
| L-36-175-0-L | 36.0         | 10 1/2           | Black   | 50        |
| L-41-175-9-L | 41.0         | 12               | Natural | 50        |
| L-41-175-0-L | 41.0         | 12               | Black   | 50        |
| L-48-175-9-L | 48.0         | 15               | Natural | 50        |
| L-48-175-0-L | 48.0         | 15               | Black   | 50        |

Use L-300C Installation Tool

### Identification Ties

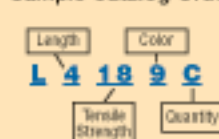


| CAT. NO.     | LENGTH (IN.) | MAX. BUNDLE DIA. | COLOR   | STD. QTY. |
|--------------|--------------|------------------|---------|-----------|
| L-7-50ID-9-C | 7.875        | 1 1/8            | Natural | 100       |
| L-4-18ID-9-C | 4.0          | 1/8              | Natural | 100       |

Bulk packages available. Contact Customer Service.

Use QC-102, L-200 or L-400-C Installation Tool

#### Sample Catalog Order:



4" Length, 18-lb. Tensile Strength, Natural Color, 100-Pack Quantity

#### Color Table

- |            |                         |
|------------|-------------------------|
| 0 - Black  | 9 - Natural             |
| 1 - Brown  | 11 - Fluorescent Pink   |
| 2 - Red    | 16 - Fluorescent Orange |
| 3 - Orange | 17 - Fluorescent Yellow |
| 4 - Yellow | 18 - Fluorescent Green  |
| 5 - Green  | 20 - Fluorescent Blue   |
| 6 - Blue   |                         |
| 7 - Purple |                         |
| 8 - Gray   |                         |

